



The network of knowledge

BEgrid

The Belgian Grid for research



BELNET - BEgrid

UCL - INGI – 18th May 2010



The network of knowledge

Agenda

- **What is BELNET?**
- **GRID worldwide**
- **BELNET as NGI**
- **Who is Begrid?**
- **How it works?**
- **Security**
- **Searching for resources**
- **Technologies**
- **Practical informations**
- **Conclusion**



The network of knowledge

What is BELNET

- BELNET is the Belgian National Research and Education Network (NREN) providing
 - internet connectivity to universities, high-school and research centers in Belgium
 - extra services to our customers including BEgrid as the National Grid Initiative (NGI) and the Computer Emergency Response Team (CERT)



The network of knowledge

Some other services

- Domain Name Servers (DNS)
- FTP Server (<ftp.belnet.be>)
- Time Server (<ntp.belnet.be>)
- Registration Authority (RA)
- Video conferencing
(<http://www.uclouvain.be/130662>)
- Instant messaging (<jabber.belnet.be>)
- ...



The network of knowledge

GRID worldwide

- GRID computing pushed by CERN for LHC experiments
- In Belgium, GRID mainly used by IIHE (ULB/VUB) and UCL (outside of BEgrid) for CMS experiments (LHC related)
- European project to support GRID computing (EGEE previously and now EGI)



The network of knowledge

European Grid Initiative EGI

- Wikipedia:
« *The **European Grid Initiative** is a sustainable **computing grid infrastructure** in Europe. The EGI will provide a forum to link together computing resources in different European countries to support international research in many scientific disciplines.* »
- Visit: <http://web.eu-egi.eu/>
- BELNET is member of the EGI and represents Belgium there





The network of knowledge

BELNET as NGI

- Each country member of the European GRID Initiative (EGI) must have a National GRID Initiative responsible for national services.
- For Belgium, BEgrid/BELNET is the NGI.



The network of knowledge

NGI Services

- Virtual Organisation Management (VOMS)
- Work Management Systems (WMS)
- Information Services (BDII)
- Monitoring
- GRID Security
- Support and Training
- Bring computer resources to EGI



The network of knowledge

Who is BEgrid?

- BEgrid is the Belgian Computing Grid for Research;
- BELNET acts as coordinator for BEgrid;
- Participants choose to share resources;
- Participants are universities and research centers (the BELNET customers).

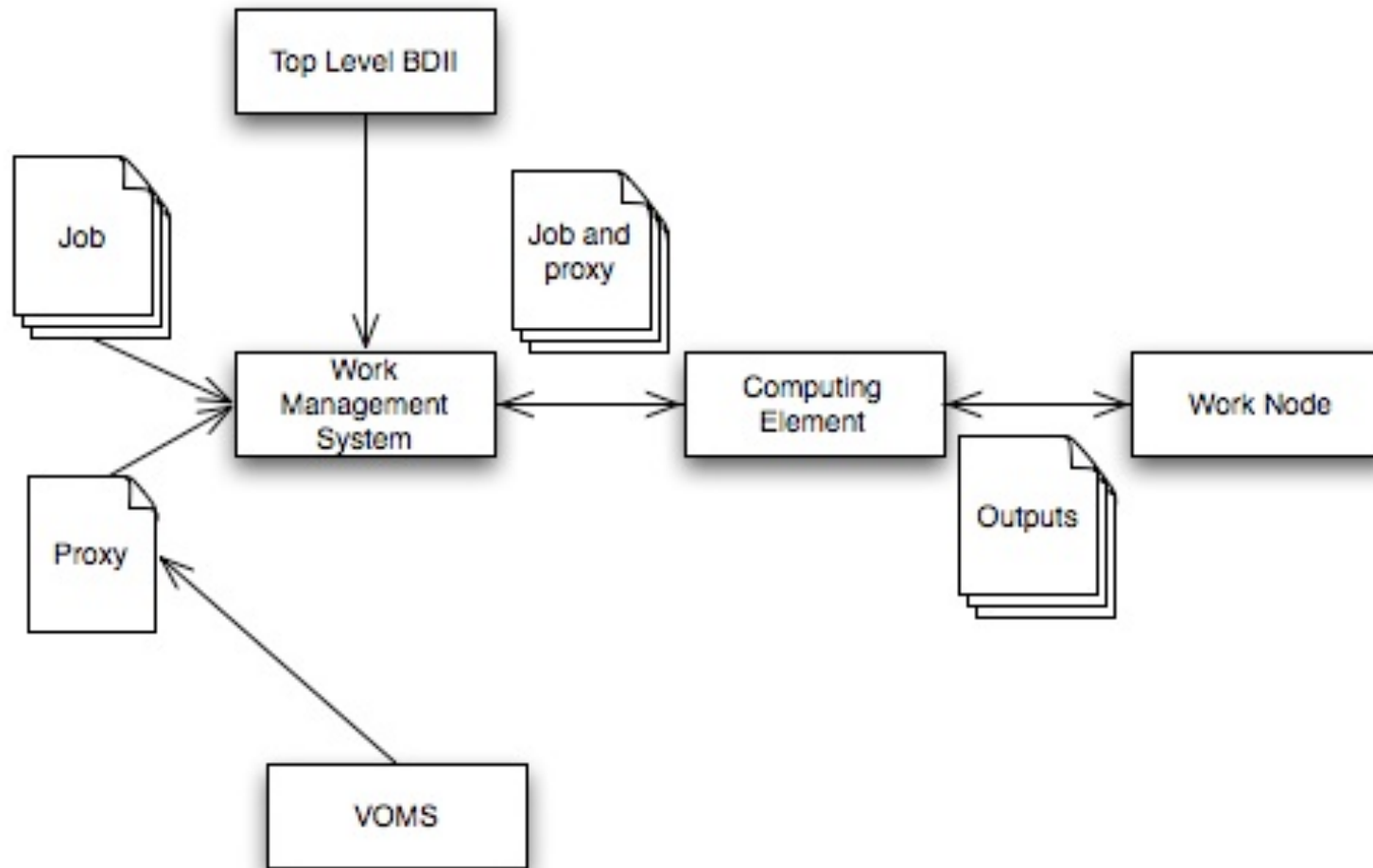
Available resources

- On 29th march 2010 for beapps:
 - IIHE (ULB/VUB): 461 cores
 - KULeuven: 456 cores
 - BELNET: 72 cores (test cluster)
 - ***CISM (UCL): 28 cores***
 - UGent (down for maintenance)
 - Universiteit Antwerpen (down for maintenance)
 - SARA (NL): 1997 cores (external partner)

Other participants

- Vlaams Instituut voor de Zee
- Faculté Universitaires Notre-Dame de la Paix (FUNDP)
- Centre of Excellence in Information and Communication Technologies (CETIC)
- Vlaams Insituut voor Technologisch Onderzoek (VITO)

How it works?



A job example

- Job description written using the *Job Description Language (JDL)*:

```
Executable = "/bin/echo";
```

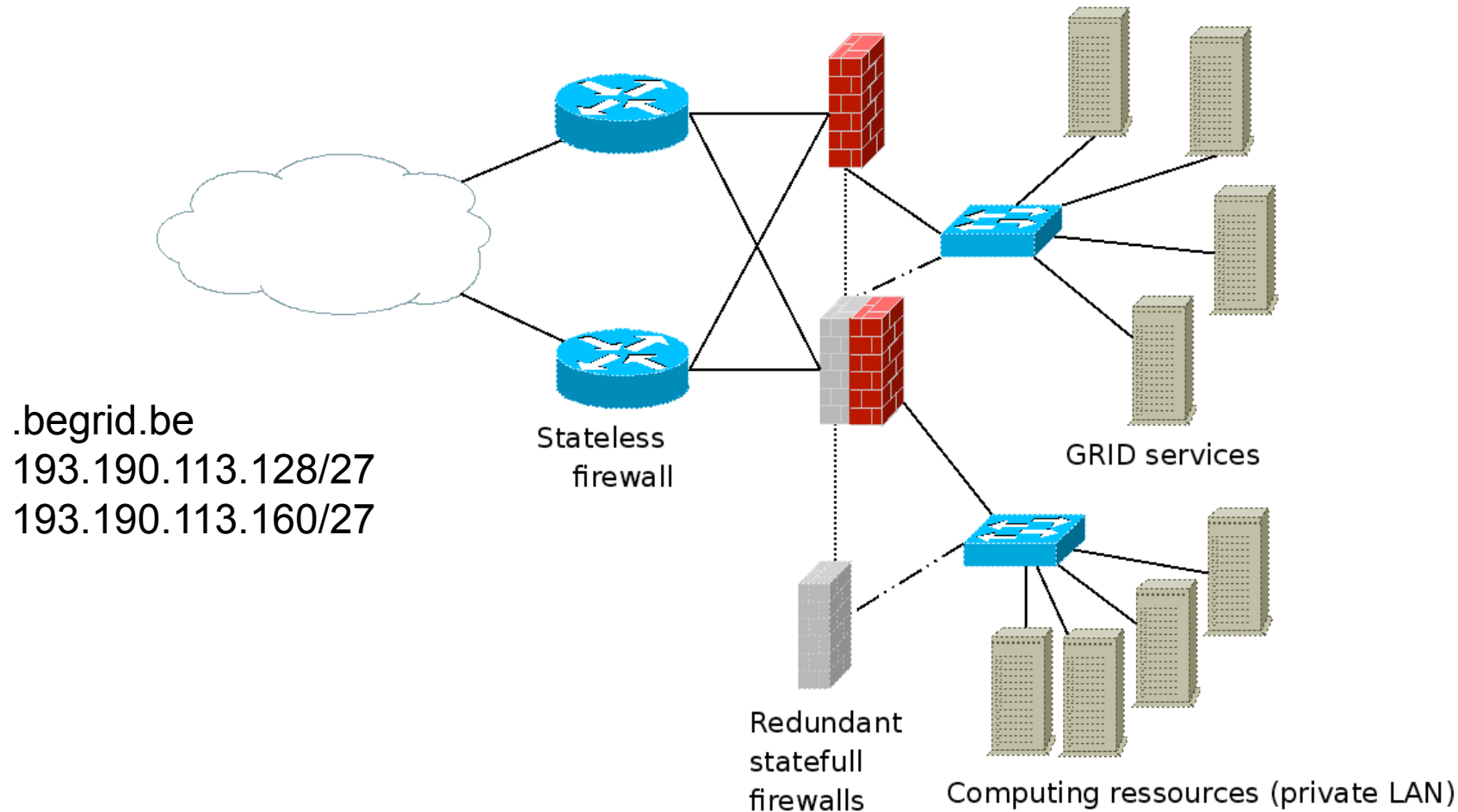
```
Arguments = "Hello World";
```

```
Stdoutput = "message.txt";
```

```
StdError = "error.txt";
```

```
OutputSandbox = {"message.txt","error.txt"};
```

Connection to BELNET network





The network of knowledge

Security

- Each server has a certificate valid for 2 years;
- Each user has a certificate valid for 1 year;
- Each job is sent with a certificate valid for maximum 24 hours (8 hours on BELNET VOs);
- BELNET is the Belgian recognized registration authority (self-signed root so the public key is exchanged when required).



The network of knowledge

Security: VOMS role

- Each institution is supporting some experiments/applications/user communities;
- Those are organised in virtual organisations (VO);
- VO membership is managed by VOMS servers;
- VOMS servers are declared at international level;
- For BEgrid: *voms.begrid.be* and *voms02.begrid.be*

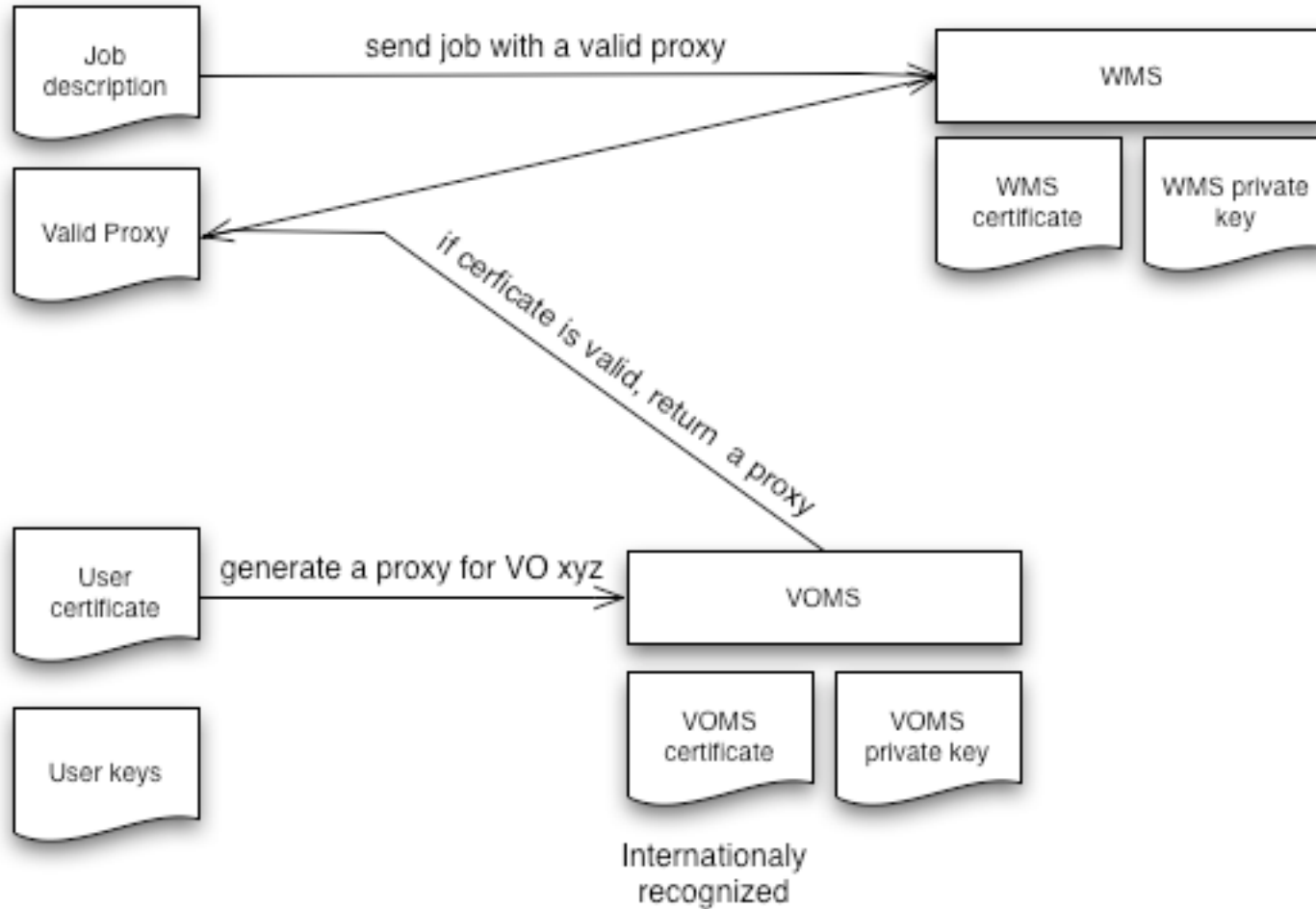


The network of knowledge

Begrid managed VOs

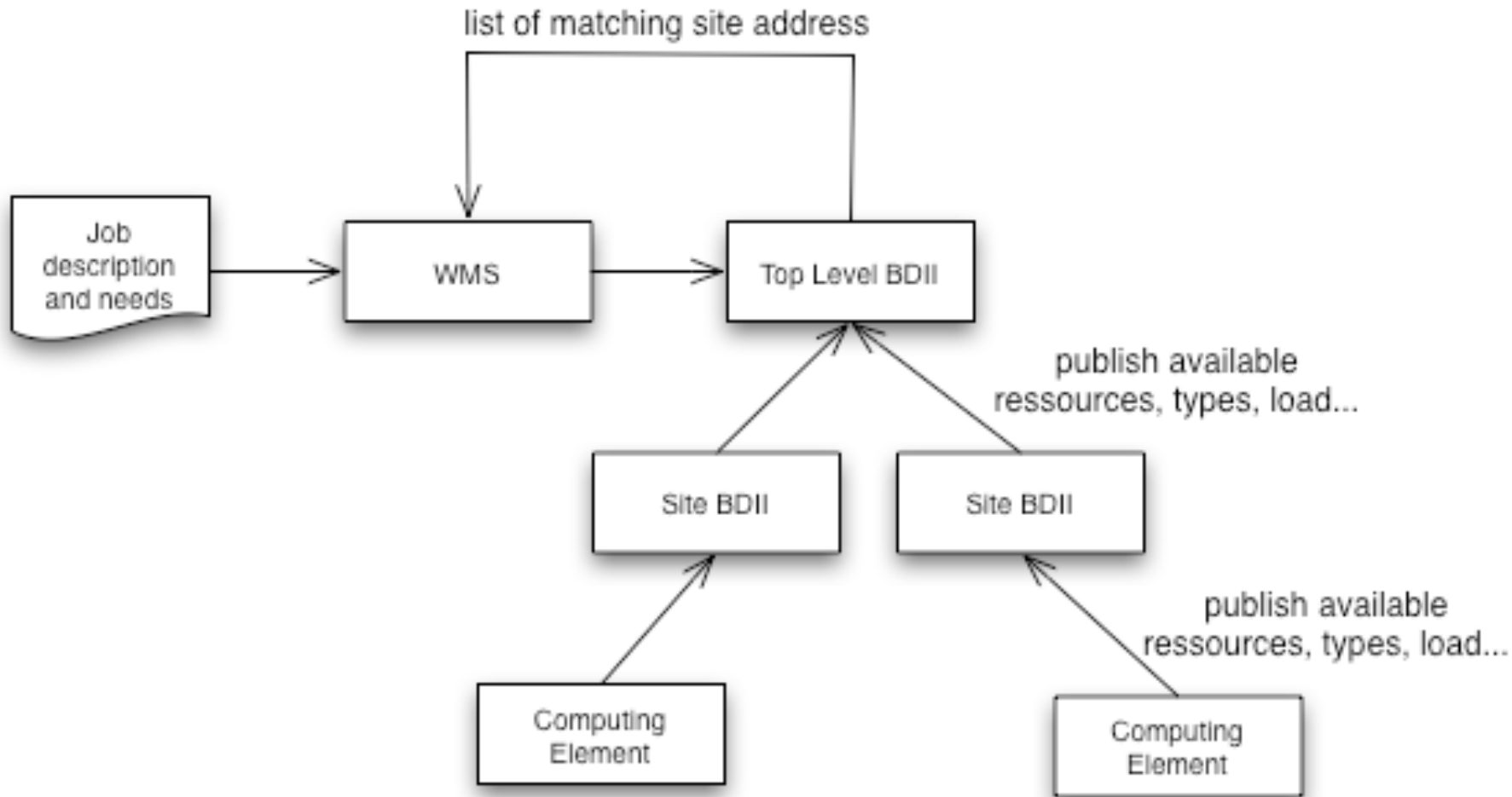
- **betest** – supported on whole BEgrid and only BEgrid for short life jobs (mainly for test and learning purpose)
- **beapps** – supported on whole Begrid + resources from SARA (NL) for production
- **becms** – for high energy physics computations

Security: what happen?



Each server is able to check identity of his pair

Searching for resources





The network of knowledge

Technologies

- Operating System Deployment and Management
 - Quattor (www.quattor.org)
- Middleware
 - glite 3.1 and gLite 3.2 (www.glite.org)
- Registration Authority
 - OpenTrust (www.opentrust.com)
- Firewall
 - pfSense (www.pfsense.org)



The network of knowledge

Practical Informations

- From a user point of view
 - Request a certificate on <https://gridra.belnet.be>
 - Request VO membership (depend on the Vos)
 - (Request a user account on a User Interface)
 - Enjoy the GRID ;-)



The network of knowledge

Practical Informations

- From a institution point of view
 - Each institution is supposed to add to the GRID enough resources to satisfy his need
 - GRID is built on resources sharing principle
 - Each institution supports the VOs wanted. For example, IHE support CMS which is a CERN VO part of LHC experiments.



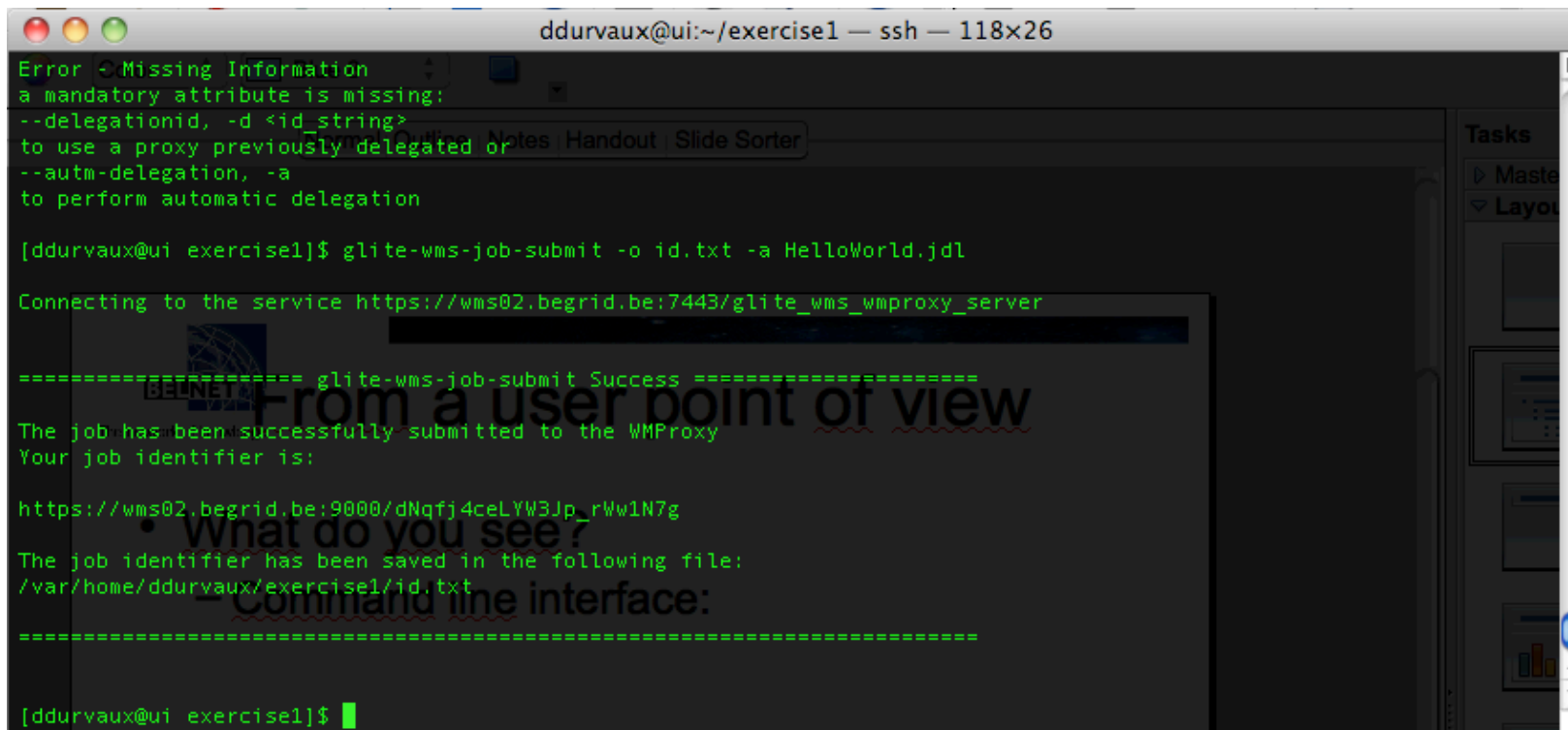
The network of knowledge

Available applications

- On betest:
 - Octave
 - R
 - Python
 - Enthought Python Distribution
 - ...
- A few compilers (gcc, python...)
- Any applications with batch support and licenses allowing GRID deployment

From a user point of view

- What do you see?
 - Command line interface:



```
ddurvaux@ui:~/exercise1 — ssh — 118x26
Error - Missing Information
a mandatory attribute is missing:
--delegationid, -d <id_string>
to use a proxy previously delegated or
--autm-delegation, -a
to perform automatic delegation

[ddurvaux@ui exercise1]$ glite-wms-job-submit -o id.txt -a HelloWorld.jdl

Connecting to the service https://wms02.begrid.be:7443/glite_wms_wmproxy_server

===== glite-wms-job-submit Success =====
The job has been successfully submitted to the WMPProxy
Your job identifier is:

https://wms02.begrid.be:9000/dNqfj4ceLYW3Jp_rWw1N7g

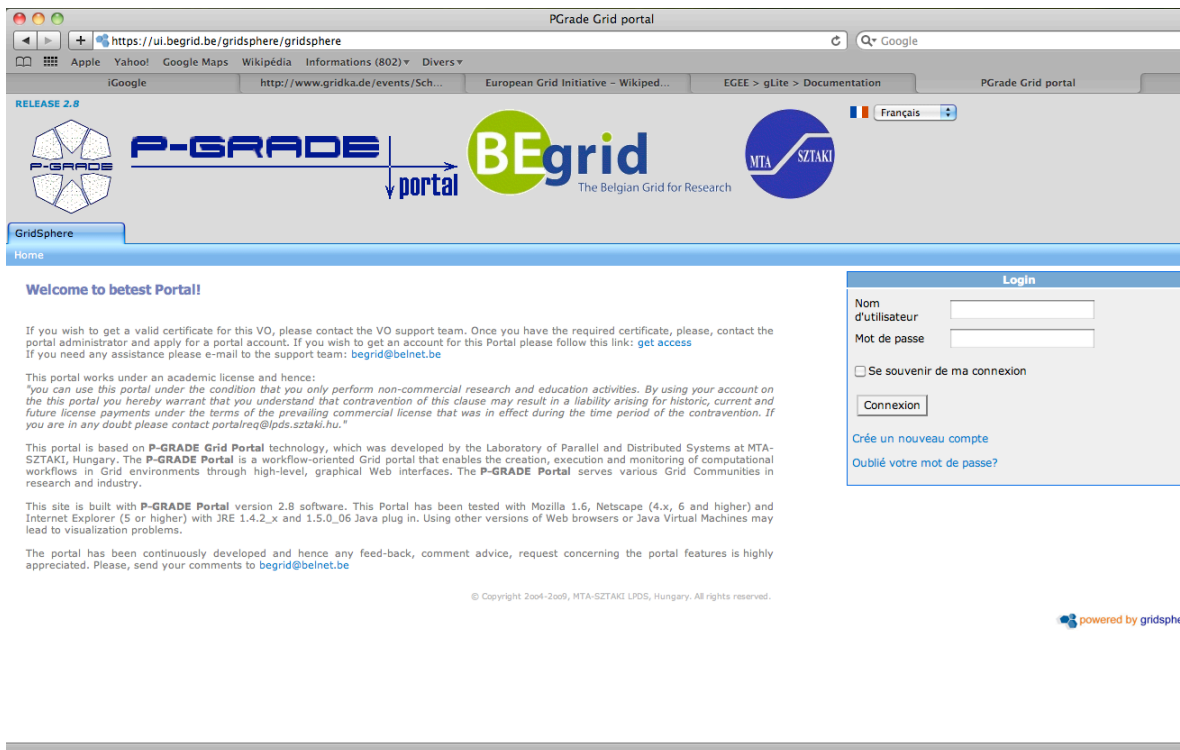
The job identifier has been saved in the following file:
/var/home/ddurvaux/exercise1/id.txt

=====

[ddurvaux@ui exercise1]$
```


From a user point of view

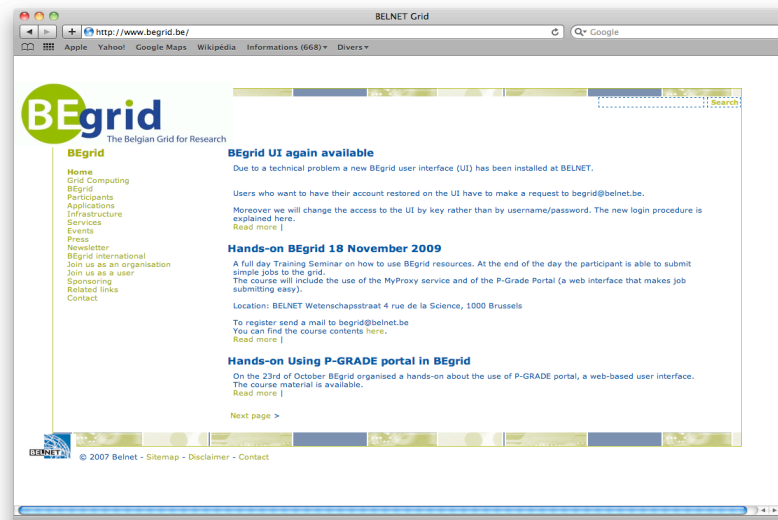
- What do you see?
 - Web interface (for instance P-Grade):



The screenshot shows a web browser window displaying the P-Grade Grid portal. The browser's address bar shows the URL <https://ui.begrid.be/gridsphere/gridsphere>. The page header includes the P-Grade logo, the BEgrid logo (The Belgian Grid for Research), and the MTA-SZTAKI logo. A navigation bar contains a 'Home' link and a 'GridSphere' menu. The main content area features a 'Welcome to betest Portal!' message, followed by instructions for obtaining a valid certificate and a portal account. A 'Login' form is visible on the right, with fields for 'Nom d'utilisateur' and 'Mot de passe', a 'Se souvenir de ma connexion' checkbox, and a 'Connexion' button. Below the login form are links for 'Crée un nouveau compte' and 'Oublié votre mot de passe?'. The footer contains copyright information: '© Copyright 2004-2009, MTA-SZTAKI LPDS, Hungary. All rights reserved.' and a 'powered by gridsphere' logo.

More info

- BELNET trainings
- Available hands-on
- Begrid website (<http://www.begrid.be>)
- GridCafé (<http://www.gridcafe.org/>)





The network of knowledge

Conclusion

- Interested?
 - Feel free to look at it!
- Typically, GRID is good for batch of jobs without too many interactions (MPI available @BELNET) consuming a lot of resources (CPU, memory and storage)
- BELNET is listening to your needs, so ask!



The network of knowledge

Questions

?

Feel free to contact us at:

begrid@belnet.be

<http://www.begrid.be>